

D E P A R T M E N T O F T H E A R M Y T E C H N I C A L M A N U A L

**DIRECT SUPPORT AND GENERAL SUPPORT MAINTENANCE
REPAIR PARTS AND SPECIAL TOOLS LISTS (INCLUDING
DEPOT MAINTENANCE REPAIR PARTS AND SPECIAL TOOLS)
CODE RECORDER RD-60/U
FSN 5805-164-7323**

Headquarters, Department of the Army, Washington, D.C.
17 September 1973

Current as of February 1973

TABLE OF CONTENTS

Section I.	INTRODUCTION	Paragraph	Page
	Scope	1-1	2
	General	1-2	2
	Explanation of columns	1-3	2
	Special information	1-4	4
	Location of repair parts	1-5	4
	Abbreviations (Not applicable)	1-6	4
	Reporting of equipment publication improvements	1-7	4
II.	REPAIR PARTS LIST		6
III.	SPECIAL TOOLS, TEST AND SUPPORT EQUIPMENT (Not applicable)		
IV.	INDEX-FEDERAL STOCK NUMBER AND REFERENCE NUMBER CROSS-REFERENCE TO FIGURE AND ITEM NUMBER		15

*This manual supersedes TM 11-5805-253-35P, 30 September 1963.

SECTION I INTRODUCTION

1-1. Scope

This manual lists repair parts and special tools required for the performance of direct support, general support, and depot maintenance of the RD-60/U. The PCCN for the RD-60/U is GCMABB for all models.

1-2. General

This repair parts and special tools list is divided into the following sections:

a. Repair Parts List - Section II. A list of repair parts authorized for the performance of maintenance at the direct support, general support, and depot level. This repair parts list is arranged in alphabetical order.

b. Special Tools, Test and Support Equipment-Section III. Not applicable.

c. Index-Federal Stock Number and Reference Number Cross-Reference to Figure and Item Number-Section IV. A list, in ascending numerical sequence, of all Federal stock numbers appearing in the listings, followed by a list, in alphameric sequence, of all reference numbers appearing in the listings. Federal stock number and reference numbers are cross-referenced to each illustration figure and item number or reference designation appearance.

1-3. Explanation of Columns

The following provides an explanation of columns found in the tabular list.

a. Source, Maintenance, and Recoverability Codes (SMR).

(1) *Source code.* Indicates the manner of acquiring support items for maintenance, repair, or overhaul of end items. Source codes are-

Code	Explanation
PA -	Item procured and stocked for anticipated or known usage.
PB -	Item procured and stocked for insurance purposes because essentiality dictates that a minimum quantity be available in the supply systems.
PC -	Item procured and stocked and which otherwise would be coded PA except that it is deteriorative in nature.
PD -	Support item, excluding support equipment, procured for initial issue or outfitting and stocked only for subsequent or additional initial issues or outfittings. Not subject to automatic replenishment.

Code	Explanation
PE -	Support equipment procured and stocked for initial issue or outfitting to specified maintenance repair activities.
PF -	Support equipment which will not be stocked but which will be centrally procured on demand.
PG -	Item procured and stocked to provide for sustained support for the life of the equipment. It is applied to an item peculiar to the equipment which because of probable discontinuance or shutdown of production facilities would prove uneconomical to reproduce at a later time.
KD -	An item of depot overhaul/repair kit and not purchased separately. Depot kit defined as a kit that provides items required at the time of overhaul or repair.
KF -	An item of a maintenance kit and not purchased separately. Maintenance kit defined as a kit that provides an item that can be replaced at organizational or direct support or general support levels of maintenance.
KB -	Item included in both a depot overhaul/repair kit and a maintenance kit.
MO -	Item to be manufactured or fabricated at organizational level.
MF -	Item to be manufactured or fabricated at direct support maintenance level.
MH -	Item to be manufactured or fabricated at general support maintenance level.
MD -	Item to be manufactured or fabricated at depot maintenance level.
AO -	Item to be assembled at organizational level.
AF -	Item to be assembled at direct support maintenance level.
AH -	Item to be assembled at general support maintenance level.
AD -	Item to be assembled at depot maintenance level.
XA -	Item is not procured or stocked because the requirements for the item will result in the replacement of the next higher assembly.
XB -	Item is not procured or stocked. If not available through salvage, requisition.
XC -	Installation drawing, diagram instruction sheet, field service drawing, that is identified by manufacturers' part number.
XD -	Support items can be requisitioned with justification.

Code

Explanation

NOTE

Cannibalization or salvage may be used as a source of supply for any items source coded above except those coded XA and aircraft support items as restricted by AR 700-42.

(2) *Maintenance code.* Maintenance codes are assigned to indicate the levels of maintenance authorized to USE and REPAIR support items. The maintenance codes are entered in the third and fourth positions of the Uniform SMR Code Format as follows—

(a) *Use (third position).* The maintenance code entered in the third position indicates the lowest maintenance level authorized to remove, replace, and use the support item. The maintenance code entered in the third position indicates one of the following levels of maintenance.

Code

Application/Explanation

— Support item is removed, replaced, used at the organizational level of maintenance.

NOTE

A code "C" may be used in this position to denote crew or operator maintenance performed within organizational maintenance.

— Support item is removed, replaced, used at the direct support maintenance level.

— Support item is removed, replaced, used at the general support maintenance.

— Support items that are removed, replaced, used at depot only.

(b) *Repair (fourth position).* The maintenance code entered in the fourth position indicates whether the item is to be repaired and identifies the lowest maintenance level with the capability to perform complete repair (i.e., all authorized maintenance functions). When a maintenance code is not used a dash (-) sign is entered. For multi-service equipment/systems or when a code is entered, this position will contain one of the following maintenance codes as assigned by the service(s) that require the code—

Code

Application/Explanation

L The lowest maintenance level capable of complete repair of the support item is the organizational level.

G The lowest maintenance level capable of complete repair of the support item is direct support.

H The lowest maintenance level capable of com-

Code

Application/Explanation

plete repair of the support item is general support.

D — The lowest maintenance level capable of complete repair of the support item is the depot level.

L — Repair restricted to designated Specialized Repair Activity.

Z — Non-repairable. No repair is authorized.

B — No repair is authorized. The item may be reconditioned by adjusting, lubricating, etc., at the user level. No parts or special tools are procured for the maintenance of this item.

(3) *Recoverability code.* Recoverability codes are assigned to support items to indicate the disposition action on unserviceable items. The recoverability code is entered in the fifth position of the uniform SMR Code Format as follows—

Code

Explanation

Z — Nonrepairable item. When unserviceable, condemn and dispose at the level indicated in the first digit of the maintenance code.

O — Repairable item. When uneconomically repairable, condemn and dispose at organizational level.

F — Repairable item. When uneconomically repairable, condemn and dispose at the direct support level.

H — Repairable item. When uneconomically repairable, condemn and dispose at the general support level.

D — Repairable item. When beyond lower level repair capability, return to depot. Condemnation and disposal not authorized below depot level.

L — Repairable item. Repair, condemnation, and disposal not authorized below depot/Specialized Repair Activity level.

A — Item requires special handling or condemnation procedures because of specific reasons (i.e., precious metal content, high dollar value, critical material or hazardous material).

b. *Federal Stock Number.* Indicates the Federal stock number assigned to the item and will be used for requisitioning purposes.

c. *Description:* Indicates the Federal item name and a minimum description required to identify the item. The last line indicates the reference number followed by the applicable Federal Supply Code for Manufacturer (FSCM) in parentheses. The FSCM is used as an element in item identification

to designate manufacturer or distributor or Government agency, etc., and is identified in SB 708-42.

d. Unit of Measure (U/M). Indicates the standard or basic quantity by which the listed item is used in performing the actual maintenance function. This measure is expressed by a two-character alphabetical abbreviation; e.g., ea, in, pr, etc., and is the basis used to indicate quantities and allowances in subsequent columns. When the unit of measure differs from the unit of issue, the lowest unit of issue that will satisfy the required units of measure will be requisitioned.

e. Quantity Incorporated in Unit. This column indicates the quantity of the item used in the equipment. Subsequent appearances of the same item in the same assembly are indicated by the letters "REF".

f. 30-Day DS/GS Maintenance Allowances.

NOTE

Allowances in GS column are for GS maintenance only.

(1) The repair parts indicated by asterisk entries in separate allowance columns for DS and GS represent those authorized for use at that category of maintenance to be requisitioned on an "as required" basis, until stockage is based on demand in accordance with AR 710-2.

(2) Allowance quantities are indicated in the special tool lists section for special tools, TMDE, and other support equipment.

g. 1-Year Allowances Per 100 Equipments/Contingency Planning Purposes. Column intentionally left blank.

h. Depot Maintenance Allowance Per 100 Equipments. This column indicates opposite the first appearance of each item the total quantity authorized for depot maintenance of 100 equipments.

i. Illustration. This column is divided as follows:

(1) *Figure number.* Indicates the figure number of the illustration on which the item is shown in TM 11-5533.

(2) *Item number.* Indicates the item number or reference designation used to reference the item in the illustration.

1-4. Special Information

a. Usable on codes are included in column 3. Uncoded items are applicable to all models. Identification of the usable on codes used in this publication are—

Code

ABH

Used On

RD-60/U

b. The following publications pertain to the RD-60/U and its components:
TM 11-5533

Code Recorder RD-60/U.

1-5. Location of Repair Parts

a. This manual contains one cross-reference index (sec IV) to be used to locate a repair part when either the Federal stock number or reference number (manufacturer's part number) is known. The first column in the index is prepared in numerical or alphanumeric sequence in ascending order. The reference numbers (manufacturer's part numbers) are listed immediately following the last listed Federal stock number in the index of Federal stock numbers.

b. When the Federal stock number or reference number is known, follow the procedures given in (1) and (2) below.

(1) Refer to the index of Federal stock numbers (sec IV) and locate the Federal stock number or reference number. The FSN and reference number are cross-referenced to the applicable figure and item number or reference designation.

(2) Refer to the repair parts list (sec II) and locate the figure number (col 10a) and item number or reference designation (col 10b) as noted in the FSN index.

c. When the figure and item number or reference designation are known, scrutinize columns 10a and 10b of the repair parts list (sec II) until the item is located.

d. When the FSN, reference number, figure number, item number and reference designation are not known, scrutinize column 3 of the repair parts list (sec II), which is arranged in alphabetical order.

1-6. Abbreviations

Not applicable.

1-7. Reporting of Equipment Publication Improvements

The reporting of errors, omissions, and recommendations for improving this publication by the individual user is encouraged. Reports should be submitted on DA Form 2028 (Recommended Changes to Publications) and forwarded direct to Commander, US Army Electronics Command, ATTN: AMSEL-MA-CR, Fort Monmouth, NJ, 07703.

(Next printed page is 6)

(1) SAC CODE	(2) FEDERAL STOCK NUMBER	(3) DESCRIPTION REFERENCE NUMBER & MFR. CODE USABLE ON CODE	(4) UNIT OF MEAS.	(5) QTY INC IN UNIT	(6) 30-DAY RE MAINT ALLOWANCE			(7) 90-DAY RE MAINT ALLOWANCE			(8) 1-YR ALY PER 100 EQUIP ENTCTY	(9) DEPOT MAINT ALY PER 100 EQUIP	(10) ILLUSTRATION	
					(a)	(b)	(c)	(a)	(b)	(c)			(a)	(b)
					1-20	21-30	31-100	1-20	21-30	31-100			FIGURE NO.	ITEM NO.
PAOZZ	5005-170-5268	ARM, RECORDER PEN NO-REF-DESIG CAPILLARY TUBING POINT FOR 0-015 IN W LINE 1.41 IN LG SC825725 (80063)	EA	1	*	*	*	*	*	*		3	1	
PAOZZ	5805-170-5269	ARM, RECORDER PEN NO-REF-DESIG CAPILLARY TUBING FOR 0-025 IN W LINE 1.41 IN LG SC825400 (80063)	EA	1	*	*	*	*	*	*		3	1	
PAOZZ	5605-546-7303	BEARING NO-REF-DESIG USED AS BEARING FOR COIL ASSY PLASTIC 3-8 LG 10-32 NF2 THD FULLY THD SC825304 (80063)	EA	2	*	*	*	*	*	*		2	11	
PAFZZ	3110-155-9628	BEARING, BALL, ANNULAR 03 SINGLE ROW.. RADIAL 1-4 X 5-8 X 0-197 IN SIND07FS104 (96906)	EA	4	*	*	*	*	*	*		2	11	03
PAFZZ	3110-155-9628	BEARING, BALL, ANNULAR 06 SINGLE ROW.. RADIAL 1-4 X 5-8 X 0-197 IN SIND07FS104 (96906)	EA	REF	*	*	*	*	*	*		2	11	06
PAFZZ	3110-155-9628	BEARING, BALL, ANNULAR 08 SINGLE ROW.. RADIAL 1-4 X 5-8 X 0-197 IN SIND07FS104 (96906)	EA	REF	*	*	*	*	*	*		2	11	08
PAFZZ	3110-155-9620	BEARING, BALL, ANNULAR 09 SINGLE ROW.. RADIAL 1-4 X 5-8 X 0-197 IN SIND07FS104 (96906)	EA	REF	*	*	*	*	*	*		2	11	09
PAFZZ	3110-155-9601	BEARING, BALL, ANNULAR 05 SINGLE ROW.. RADIAL 1-2 X 3-16 X 0-1969 IN 030-3 (96232)	EA	1	*	*	*	*	*	*		2	11	05
PAFZZ	3110-155-3416	BEARING, BALL, ANNULAR 02 SINGLE ROW.. RADIAL 0-875 X 0-375 IN X 0-2012 IN NO 77R6 (22222)	EA	2	*	*	*	*	*	*		2	11	02
PAFZZ	3110-155-8416	BEARING, BALL, ANNULAR 04 SINGLE ROW.. RADIAL 0-875 X 0-375 IN X 0-2012 IN NO 77R6 (22222)	EA	REF	*	*	*	*	*	*		2	11	04
PANZZ	5805-693-9923	BRACKET NO-REF-DESIG FOR INSTALLING..... CYCLOWM MOTORS IN PD-60-U PER SB 11-201 SCC25636 (80063)	EA	1	*	*	*	*	*	*		2		
PAOZZ	4730-378-5594	BUSHING 025 FOR INK HOSE COUPLING 1-16 ID X 3-32 OD X 5-16 IN LG SCC25700-5 (80063)	EA	1	*	*	*	*	*	*		3	7	025
PAOZZ	6145-164-8621	CABLE POWER, ELECTRICAL NO-REF-DESIG 2.. COPPER STRANDED WIRES 18 AWG 10FT LG (AUTHORIZED ALLOWANCES WILL BE MINIMUM OF OR A MULTIPLE OF 10FT) COO2HG2-10-0300 (81349)	FT	10	*	*	*	*	*	*		1	1	
PAOZZ	8110-664-3793	CAN, TELESCOPE TOP NO-REF-DESIG FOR..... MAINT PARTS 3 X 7-16 SCC25700-6 (80063)	EA	1	*	*	*	*	*	*		3	1	
PAFZZ	5910-160-2299	CAPACITOR, FIXED, ELECTROLYTIC C0 15.. UF, 450 VDCM CE51F150K (81349)	EA	1	*	*	*	*	*	*		3	14	C0
PAFZZ	5910-101-5781	CAPACITOR, FIXED, MICA DIELECTRIC C1..... 2,000 UUF, 500 VDCM CM300202J (81349)	EA	1	*	*	*	*	*	*		3	15	C1

SECTION II

TM 11-5835-253-34P

(1) NMR CODE	(2) FEDERAL STOCK NUMBER	(3) DESCRIPTION REFERENCE NUMBER & MFR. CODE USABLE ON CODE	(4) UNIT OF MEAS	(5) QTY INC IN UNIT	(6) 30-DAY GS MAINT ALLOWANCE			(7) 30-DAY GS MAINT ALLOWANCE			(8) 1-YR ALW PER 100 EQUIP ENTCTY	(9) DEPOT MAINT ALW PER 100 EQUIP	(10) ILLUSTRATION	
					(a)	(b)	(c)	(a)	(b)	(c)			(a)	(b)
					1-20	21-50	51-100	1-20	21-50	51-100			FIGURE NO.	ITEM NO.
PAFZZ	5910-161-6561	CAPACITOR, FIXED, PAPER DIELECTRIC C2.... 2-0 UF, 400 VDCW CP6981EF105K (01349)	EA	1	*	*	*	*	*	*		3	14	C2
PAFZZ	5910-112-8333	CAPACITOR, FIXED, PAPER DIELECTRIC C3A... C3A, B C7A, B 2 SEC, 100,000 UWF, 600 VDCW CP6984EF104V (01349)	EA	REF	*	*	*	*	*	*		3	14	C3A
PAFZZ	5910-112-8333	CAPACITOR, FIXED, PAPER DIELECTRIC C7A.. C3A, B C7A, B 2 SEC, 100,000 UWF, 600 VDCW CP6984EF104V (01349)	EA	REF	*	*	*	*	*	*		3	14	C7A
PAFZZ	5910-129-6255	CAPACITOR, FIXED, PAPER DIELECTRIC C4.... 20,000 UWF, 600 VDCW CP29A1EF203K (01349)	EA	2	*	*	*	*	*	*		3	22	C4
PAFZZ	5910-129-6255	CAPACITOR, FIXED, PAPER DIELECTRIC C5.... 20,000 UWF, 600 VDCW CP29A1EF203K (01349)	EA	REF	*	*	*	*	*	*		3	15	C5
PAFZZ	5910-112-7006	CAPACITOR, FIXED, PAPER DIELECTRIC C6.... 20,000 UWF, 1900 VDCW CP29A1EM203K (01349)	EA	1	*	*	*	*	*	*		3	15	C6
PAFZZ	5910-160-1166	CAPACITOR, FIXED, PAPER DIELECTRIC C9.... 4 UF, 220 VDCW P10261 (24165)	EA	1	*	*	*	*	*	*		3	22	C9
PAFZZ	5910-255-6159	CAPACITOR, FIXED, PAPER DIELECTRIC C19... 4 UF, 600 VDCW CP4002EF403K (01349)	EA	3	*	*	*	*	*	*		3	15	C10
PAFZZ	5910-255-6159	CAPACITOR, FIXED, PAPER DIELECTRIC C11... 4 UF, 600 VDCW CP4002EF403K (01349)	EA	REF	*	*	*	*	*	*		3	15	C11
PAFZZ	5910-255-6159	CAPACITOR, FIXED, PAPER DIELECTRIC C12... 4 UF, 600 VDCW CP4002EF403K (01349)	EA	REF	*	*	*	*	*	*		3	15	C12
PACZZ	5920-351-7264	CAP. ELECTRICAL NO-REF-DESIG FOR..... FUSEHOLDER E7, E8 9327 (10133)	EA	2	*	*	*	*	*	*		3	1	
PAOZZ	5605-356-3566	CLEANER, PEN NO-REF-DESIG 3 IN LG X 0-.. 004 IN DIA SCC25700-1 (00063)	EA	5	*	*	*	*	*	*		3	1	
PAOZZ	5805-356-3567	CLEANER, PEN NO-REF-DESIG 3 IN LG X 0-.. 008 IN DIA SCC25700-2 (00063)	EA	2	*	*	*	*	*	*		3	1	
PAOZZ	5805-356-3568	CLEANER, PEN NO-REF-DESIG 3 IN LG X..... 0.024IN W X 0.0025 INTHK. SCC25700-3 (00063)	EA	4	*	*	*	*	*	*		3	1	
PAFZZ	5556-569-0333	COIL, REPRODUCER HEAD L2 TRANSFORMS... OUTPUT SIGNAL INTO PEN MOVEMENT SCB25500 (00063)	EA	1	*	*	*	*	*	*		3	10	L2
PAFZZ	5950-232-8643	COIL, SOLENOID L3 COUPLES TAPE DRIVE.. DISC TO CONE WHEN POWER IS APPLIED SCB25672 (00063)	EA	1	*	*	*	*	*	*		3	15	L3
PAFZZ	6105-407-6244	CONE, ROTARY DRIVE 026 TAPERED FROM 2-.. 1-2 IN DIA TO 0 IN DIA SCB25637 (00063)	EA	1	*	*	*	*	*	*		15	11	026

SECTION II

TM 11-5805-253-34P

(1) SAC CODE	(2) FEDERAL STOCK NUMBER	(3) DESCRIPTION REFERENCE NUMBER & MFR. CODE USABLE ON CODE	(4) UNIT OF MEAS	(5) QTY INC IN UNIT	(6) 30-DAY D4 MAINT ALLOWANCE			(7) 30-DAY G5 MAINT ALLOWANCE			(8) 1-YR MAINT PER 100 EQUIP CENTCT	(9) DEPOT MAINT PER 100 EQUIP	(10) ILLUSTRATION	
					(a)	(b)	(c)	(a)	(b)	(c)			(a)	(b)
					1-20	21-30	31-100	1-20	21-30	31-100			FIGURE NO.	ITEM NO.
PAOZZ	5935-258-9881	CONNECTOR, PLUG, ELECTRICAL J1 2 CONT STRAIGHT SHAPE PAL 31-32 X 1-3-0 IN 7257 (83315)	EA	1	*	*	*	*	*	*		3	15	J1
PAOZZ	5935-283-3392	CONNECTOR, PLUG, ELECTRICAL P2 2 FLAT. MALE PARALLEL CONT STRAIGHT SHAPE 1-17-32 X 3-4 X 23-32 IN SC069167 (80063)	EA	1	*	*	*	*	*	*		3	1	P2
PAOZZ	5935-199-6279	CONNECTOR, RECEPTACLE, ELECTRICAL P1 2 FLAT MALE PARALLEL CONT SIG SOCKET S0178 (02640)	EA	1	*	*	*	*	*	*		3	15	P1
PAOZZ	5805-399-7299	COVER A1 FOR INK RESERVOIR 2-1-4 IN X 3-0 IN 25617 (30350)	EA	1	*	*	*	*	*	*		2		A1
PAOZZ	5355-171-3482	DIAL 13 FOR CALIBRATING KN08 TYPE 1- 13-16 X7-0 IN W-CALIBRATED SKIRT HR33 (42498)	EA	2	*	*	*	*	*	*		2	1	13
PAOZZ	5355-171-1681	DIAL 14 FOR CALIBRATING KN06 TYPE 1- 13-16 X7-0 IN W-CALIBRATED SKIRT HR33 (42498)	EA	REF	*	*	*	*	*	*		2		14
PAOZZ	5560-188-8573	ELECTRON TUBE V8.....	EA	2	*	*	*	*	*	*		3	14	V8
PAOZZ	5960-188-8573	OD3 (81349) ELECTRON TUBE V9.....	EA	REF	*	*	*	*	*	*		3	14	V9
PAOZZ	5966-168-3949	OD3 (81349) ELECTRON TUBE V5.....	EA	1	*	*	*	*	*	*		100	14	V5
PAOZZ	5968-248-8491	5V4G (81349) ELECTRON TUBE V2.....	EA	1	*	*	*	*	*	*		3	14	V2
PAOZZ	5960-262-0202	6X4WT (81349) ELECTRON TUBE V1.....	EA	1	*	*	*	*	*	*		3	14	V1
PAOZZ	5960-262-0161	6SK7WA (81349) ELECTRON TUBE V4.....	EA	1	*	*	*	*	*	*		100	14	V4
PAOZZ	5965-188-3574	6LW6 (81349) ELECTRON TUBE V3.....	EA	1	*	*	*	*	*	*		100	14	V3
PAOZZ	5960-100-0680	6SJTWT (81349) ELECTRON TUBE V6.....	EA	1	*	*	*	*	*	*		100	14	V6
PAOZZ	5960-503-4880	6X4W (81349) ELECTRON TUBE V7.....	EA	1	*	*	*	*	*	*		3	14	V7
PAFZZ	5920-284-9201	0A2WA (81349) FUSEHOLDER XF1 ACCOM 1-1-4 X 1-4 IN.... CARTRIDGE TYPE FUSE EXTRACTOR POST TYPE MCHJELQZ (10133)	EA	2	*	*	*	*	*	*		3	15	XF1
PAFZZ	5920-284-9201	FUSEHOLDER XF2 ACCOM 1-1-4 X 1-4 IN.... CARTRIDGE TYPE FUSE EXTRACTOR POST TYPE MCHJELQZ (10133)	EA	REF	*	*	*	*	*	*		3	15	XF2
PACZZ	5920-199-9484	FUSE, CARTRIDGE F2 2 AMP, 250V	EA	1	*	*	*	*	*	*		50	22	F2
PACZZ	5920-199-3973	413002 (75915) FUSE, CARTRIDGE FU-37 F1 3 AMP, 250V .	EA	1	*	*	*	*	*	*		3	22	F1
PAFZZ	5835-351-4034	413003 (75915) GEAR, SPUR NO-REF-DESIG DRIVES OUTPUT... SHAFT	EA	1	*	*	*	*	*	*		3	13	
PAFZZ	5605-404-9031	SC025670 (80063) GEAR, SPUR NO-REF-DESIG VARIABLE SPEED.. OUTPUT GEAR SC025662 (80063)	EA	1	*	*	*	*	*	*		3	11	

(1) SNR CODE	(2) FEDERAL STOCK NUMBER	(3) DESCRIPTION REFERENCE NUMBER & MFR. CODE USABLE ON CODE	(4) UNIT OF MEAS	(5) QTY INC IN UNIT	(6) 30-DAY DS MAINT ALLOWANCE			(7) 30-DAY GS MAINT ALLOWANCE			(8) 1-YR ALW PER 100 EQUIP CNTCTY	(9) DEPOT MAINT ALW PER 100 EQUIP	(10) ILLUSTRATION	
					(a)	(b)	(c)	(a)	(b)	(c)			(a)	(b)
					1-20	21-50	51-100	1-20	21-50	51-100			FIGURE NO.	ITEM NO.
PAHZZ	3020-219-9703	GEAR, WORM NO-REF-DESIG VARIES SPEED OF. OUTPUT SHAFT 0-705 DIA X 1-4 BORE X 5-8 INCHK SCB25602 (80063)	EA	1				*	*	*		3	11	
PAHZZ	5605-254-6829	GEAR, WORM NO-REF-DESIG VARIES SPEED OF. OUTPUT SHAFT 0-583 DIA X 1-4 IN X 1-1-16 IN LG HOUN (71041)	EA	1				*	*	*		3	13	
PAFZZ	5935-283-1269	JACK JJ-034 J1.....	EA	1	*	*	*	*	*	*		3	15	J1
PAOZZ	5355-160-6076	JJ034 (ZZZZZ) KNOB NO-REF-DESIG RD BLACK ALUMINUM 2- 1-0 X 15-16 IN SCB25757 (80063)	EA	1	*	*	*	*	*	*		3	1	
PAOZZ	6240-179-1007	LAMP, GLOW I1 1-25 W 105-120 V	EA	2	*	*	*	*	*	*		3	15	I1
PAOZZ	6240-179-1807	WILL15098B (81349) LAMP, GLOW I2 1-25 W 105-120 V	EA	REF	*	*	*	*	*	*		3	15	I2
PAOZZ	6210-174-8866	WILL15098B (81349) LENS, INDICATOR LIGHT NO-REF-DESIG..... WHITE	EA	2	*	*	*	*	*	*		5	1	
PAFZZ	6210-186-7910	52-995 (72619) LIGHT, INDICATOR I1 W/LENS 2-1-0 X... 13-16 IN	EA	2	*	*	*	*	*	*		5	15	I1
PAFZZ	6210-186-7910	32400-995 (72619) LIGHT, INDICATOR I2 W/LENS 2-1-0 X... 13-16 IN	EA	REF	*	*	*	*	*	*		5	15	I2
PAFMD	6105-252-0343	32400-995 (72619) MOTOR, ALTERNATING CURRENT 01 SYNC.... TYPE 115 VAC, 60 CYC SINGLE PHASE	EA	1	*	*	*	*	*	*		2	15	01
PAOZZ	5805-170-5267	HDC2910-2 (81764) PEN, RECORDER 016 WIDE CAPILLARY TUBE. POINT 0-040 IN PEN	EA	1	*	*	*	*	*	*		3	1	016
PAHZZ	5805-356-3440	SCB25721 (80063) PLATEN NO-REF-DESIG REGULATES PEN..... PRESSURE	EA	1				*	*	*		3	7	
PAFZZ	5950-243-5288	SCB25720 (80063) REACTOR L1 4 HY 35 MA 520 OHMS DC... RESISTANCE MS CASE 2-5-0 SQ X 2-1-4 IN H	EA	1	*	*	*	*	*	*		2	14	L1
PAFZZ	5950-242-1702	SCB25362 (80063) REACTOR L4 10 HY 120 MA 200 OHMS DC. RESISTANCE MS CASE 2-5-0 SQ X 3-1-4 INH	EA	1	*	*	*	*	*	*		2	14	L4
PAFZZ	6130-199-9518	SCB25361 (80063) RECTIFIER, METALLIC CR1 SELENIUM 130.. VAC INPUT 120 VDC OUTPUT 100 MA 1-3-16 IN SQ X 5-0 IN H	EA	1	*	*	*	*	*	*		3	15	CR1
PAHZZ	5835-162-6337	40302625 (88421) RESERVOIR NO-REF-DESIG HOLDSINK SUPPLY .	EA	1				*	*	*		3	1	
PAFZZ	5905-229-2037	SCC25613 (80063) RESISTOR, FIXED, COMPOSITION R2 4,700. OHM, FORM10PCT 1 W	EA	1	*	*	*	*	*	*		3	15	R2
PAFZZ	5905-295-3410	RC326F472K (81349) RESISTOR, FIXED, COMPOSITION R0 47,000 CONTINUED	EA	1	*	*	*	*	*	*		3	15	R0

SECTION II

TM 11-5855-253-34P

SHE CODE	FEDERAL STOCK NUMBER	REFERENCE NUMBER & MFR. CODE	USABLE ON CODE	UNIT OF MEAS	QTY INC IN UNIT	30-DAY ES MAINT ALLOWANCE			30-DAY GS MAINT ALLOWANCE			1-YR ALW PER 100 EQUIP CONTACT	2-YR MAINT ALW PER 100 EQUIP	ILLUSTRATION	
						(a)	(b)	(c)	(a)	(b)	(c)			(a)	(b)
						1-20	21-30	31-100	1-20	21-30	31-100			FIGURE NO.	ITEM NO.
		CONTINUED													
PAFZZ	5905-279-2603	RC20GF473K (81349)	R1	470...	EA	1	*	*	*	*	*	*	3	15	R1
		OHM, FORMIOPCT 1-W RESISTOR, FIXED, COMPOSITION													
PAFZZ	5905-279-2515	RC32GF471K (81349)	R14	470...	EA	1	*	*	*	*	*	*	3	15	R14
		OHM, FORMIOPCT 1 W RESISTOR, FIXED, COMPOSITION													
PAFZZ	5905-279-2295	RC20GF474J (81349)	R16	6,000.	EA	2	*	*	*	*	*	*	3	15	R16
		OHM, FORMIOPCT 1-2 W RESISTOR, FIXED, COMPOSITION													
PAFZZ	5705-279-2295	RC42GF682K (81349)	R19	6,000.	EA	REF	*	*	*	*	*	*	3	15	R19
		OHM, FORMIOPCT 2W RESISTOR, FIXED, COMPOSITION													
PAFZZ	5905-279-1717	RC42GF682K (81349)	R11	150...	EA	1	*	*	*	*	*	*	3	15	R11
		OHM, FORMIOPCT 2W RESISTOR, FIXED, COMPOSITION													
PAFZZ	5905-249-4248	RC32GF154K (81349)	R10	33,000	EA	1	*	*	*	*	*	*	3	15	R10
		OHM, FORMIOPCT 1 W RESISTOR, FIXED, COMPOSITION													
PAFZZ	9905-249-4190	RC20GF333K (81349)	R17	8,200.	EA	1	*	*	*	*	*	*	3	15	R17
		OHM, FORMIOPCT 1-2 W RESISTOR, FIXED, COMPOSITION													
PAFZZ	5905-245-0023	RC42GF822K (81349)	R4	6,000.	EA	1	*	*	*	*	*	*	3	15	R4
		OHM, FORMIOPCT 2 W RESISTOR, FIXED, COMPOSITION													
PAFZZ	5905-195-6886	RC20GF682K (81349)	R3	1,000.	EA	1	*	*	*	*	*	*	3	15	R3
		OHM, FORMIOPCT 1-2 W RESISTOR, FIXED, COMPOSITION													
PAFZZ	5905-195-6761	RC20GF102J (81349)	R5	100...	EA	2	*	*	*	*	*	*	3	15	R5
		OHM, FORMIOPCT 1-2 W RESISTOR, FIXED, COMPOSITION													
PAFZZ	5905-195-6743	RC20GF104J (81349)	R20	2,700.	EA	1	*	*	*	*	*	*	3	15	R20
		OHM, FORMIOPCT 1-2 W RESISTOR, FIXED, COMPOSITION													
PAFZZ	5905-192-0390	RC42GF272K (81349)	R7	1 MEG.	EA	1	*	*	*	*	*	*	3	15	R7
		OHM, FORMIOPCT 2 W RESISTOR, FIXED, COMPOSITION													
PAFZZ	5905-190-6665	RC20GF105J (81349)	R12	270...	EA	2	*	*	*	*	*	*	3	15	R12
		OHM, FORMIOPCT 1-2 W RESISTOR, FIXED, COMPOSITION													
PAFZZ	5905-190-8865	RC20GF274J (81349)	R13	270...	EA	REF	*	*	*	*	*	*	3	15	R13
		OHM, FORMIOPCT 1-2 W RESISTOR, FIXED, COMPOSITION													
PAFZZ	5905-185-8521	RC20GF274J (81349)	R21	10,000	EA	2	*	*	*	*	*	*	3	15	R21
		OHM, FORMIOPCT 1-2 W RESISTOR, FIXED, COMPOSITION													
PAFZZ	5905-105-8521	RC42GF103K (81349)	R22	10,000	EA	REF	*	*	*	*	*	*	3	15	R22
		OHM, FORMIOPCT 2 W RESISTOR, FIXED, COMPOSITION													
PAFZZ	5905-642-3768	RC42GF103K (81349)	R15	2,500...	EA	1	*	*	*	*	*	*	3	15	R15
		OHM, FORMIOPCT 2 W RESISTOR, FIXED, WIREWOUND													

(1) SIR CODE	(2) FEDERAL STOCK NUMBER	(3) DESCRIP 'ON REFERENCE NUMBER & MFR. CODE USABLE ON CODE	(4) UNIT OF MEAS	(5) QTY INC IN UNIT	(6) 30-DAY QS MAINT ALLOWANCE			(7) 90-DAY QS MAINT ALLOWANCE			(8) 1-YR ALN PER 100 EQUIP CMTYCY	(9) DEPOT MAINT ALN PER 100 EQUIP	(10) ILLUSTRATION	
					(a)	(b)	(c)	(a)	(b)	(c)			(a)	(b)
					1-20	21-30	31-100	1-20	21-30	31-100			FIGURE NO.	ITEM NO.
CONTINUED														
PAFZZ	5565-117-6862	RESISTOR, VARIABLE, COMPOSITION R9 25. 000 OHM, 2 W R404TSK2374 (81349)	EA	1	*	*	*	*	*	*		3	15	R9
PAFZZ	5905-112-4271	RESISTOR, VARIABLE, WIREWOUND R10 15... 000 OHM, 4W R430A1ND193AK (81345)	EA	1	*	*	*	*	*	*		3	15	R10
PAFZZ	5810-161-6689	ROLLER, TAPE Q27 TAPE TOLE ROLLER	EA	1	*	*	*	*	*	*		3	7	Q27
PAQZZ	5665-651-5449	SCREW NO-REF-DESIG USED AS BEARING FOR.. PEN SC825675 (80063)	EA	2	*	*	*	*	*	*		5	10	
PAQZZ	5305-407-0407	SCREW, EXTERNALLY RELIEVED BODY NO-REF-.. DESIG FIL HD STEEL 1-4 IN - 20 THD 19- 64 IN H/LOTED DRIVE SC825691 (80063)	EA	2	*	*	*	*	*	*		5	10	
PAQZZ	5305-407-8484	SCREW, EXTERNALLY RELIEVED BODY NO-REF-.. DESIG FIL HD STEEL 1-4 IN - 20 THD 7- 16 7-32 IN SLOTTED DRIVE SC825650 (80063)	EA	2	*	*	*	*	*	*		5	10	
PAQZZ	5385-407-8743	SCREW, MACHINE NO-REF-DESIG BIND HD STEEL 4-2UNC 21-64 IN LG SC825733 (80063)	EA	1	*	*	*	*	*	*		5	13	
PAQZZ	5305-480-6842	SET SCREW NO-REF-DESIG SLOTTED DRIVE ... STEEL 8-3UNC 1 IN LG SC825649 (80063)	EA	1	*	*	*	*	*	*		3	13	
PAQZZ	5365-467-9058	SET SCREW NO-REF-DESIG SLOTTED DRIVE 5- 4UNC 15-16 IN LG SC825611 (80063)	EA	1	*	*	*	*	*	*		3	13	
PAQZZ	5305-322-4550	SET SCREW NO-REF-DESIG SLOTTED DRIVE 5- 4UNC 1 IN LG O/A SC825610 (80063)	EA	1	*	*	*	*	*	*		3	13	
PAFZZ	5835-405-1460	SHAFT NO-REF-DESIG P-O FRAME ASSY 10-9- 16 IN X 0-574 SC825660 (80063)	EA	1	*	*	*	*	*	*		1	11	
PAFZZ	5865-405-1471	SHAFT NO-REF-DESIG P-O DRIVE ASSY 4-3-4 X 1-4 SC825607 (80063)	EA	1	*	*	*	*	*	*		1	13	
PAFZZ	5605-465-1470	SHAFT NO-REF-DESIG P-O SHAFT AND PLATE.. ASSY 2-1-4 X 3-16 SC825700 (80063)	EA	1	*	*	*	*	*	*		1	11	
PAFZZ	5805-405-1449	SHAFT NO-REF-DESIG DRIVE ASSY 4-5-0 X.. 1-4 IN SC825670 (80063)	EA	1	*	*	*	*	*	*		1	13	
PAQZZ	5968-578-5584	SHIELD, ELECTRON TUBE E5 CAD PL RD .. OPEN TOP 13-16 X2-1-4 13A12504P24-5 (71785)	EA	2	*	*	*	*	*	*		10	14	E5
PAQZZ	5968-578-5564	SHIELD, ELECTRON TUBE E6 CAD PL RD .. OPEN TOP 13-16 X2-1-4 13A12504P24-5 (71785)	EA	REF	*	*	*	*	*	*		10	14	E6

SECTION II

TM 11-5805-253-34P

SMB CODE	FEDERAL STOCK NUMBER	DESCRIPTION		UNIT OF MEAS	QTY INC IN UNIT	30-DAY DE MAINT ALLOWANCE			30-DAY CS MAINT ALLOWANCE			1-YR ALY PER 100 EQUIP CENTCY	DEPOT MAINT ALY PER 100 EQUIP	ILLUSTRATION		
						(a)	(b)	(c)	(a)	(b)	(c)			(a)	(b)	
						1-20	21-30	31-100	1-20	21-30	31-100			FIGURE NO.	ITEM NO.	
PAFZZ	5935-232-3758	TS102C01 (81349)	SOCKET, ELECTRON TUBE X6	7 CONT	EA	2	*	*	*	*	*	*		3	15	X6
PAFZZ	5935-232-3758	TS102C01 (81349)	SOCKET, ELECTRON TUBE X7	7 CONT	EA	REF	*	*	*	*	*	*		3	15	X7
PAFZZ	5935-232-3715	115001ANS (ZZZZZ)	SOCKET, ELECTRON TUBE X1	8 CONT OCTAL 1-1-8 X 1-2 IN	EA	8	*	*	*	*	*	*		3	15	X1
PAFZZ	5935-232-3715	115001ANS (ZZZZZ)	SOCKET, ELECTRON TUBE X2	8 CONT OCTAL 1-1-8 X 1-2 IN	EA	REF	*	*	*	*	*	*		3	15	X2
PAFZZ	5935-232-3715	115001ANS (ZZZZZ)	SOCKET, ELECTRON TUBE X3	8 CONT OCTAL 1-1-8 X 1-2 IN	EA	REF	*	*	*	*	*	*		3	15	X3
PAFZZ	5935-232-3715	115001ANS (ZZZZZ)	SOCKET, ELECTRON TUBE X4	8 CONT OCTAL 1-1-8 X 1-2 IN	EA	REF	*	*	*	*	*	*		3	15	X4
PAFZZ	5935-232-3715	115001ANS (ZZZZZ)	SOCKET, ELECTRON TUBE X5	8 CONT OCTAL 1-1-8 X 1-2 IN	EA	REF	*	*	*	*	*	*		3	15	X5
PAFZZ	5935-232-3715	115001ANS (ZZZZZ)	SOCKET, ELECTRON TUBE X8	8 CONT OCTAL 1-1-8 X 1-2 IN	EA	REF	*	*	*	*	*	*		3	15	X8
PAFZZ	5935-232-3715	115001ANS (ZZZZZ)	SOCKET, ELECTRON TUBE X9	8 CONT OCTAL 1-1-8 X 1-2 IN	EA	REF	*	*	*	*	*	*		3	15	X9
PAFZZ	5935-232-3715	115001ANS (ZZZZZ)	SOCKET, ELECTRON TUBE X10	8 CONT OCTAL 1-1-8 X 1-2 IN	EA	REF	*	*	*	*	*	*		3	15	X10
PAFZZ	6940-250-6563	SCB25629 (80063)	SPRING, HELICAL, COMPRESSION 010.....	LOADING FOR INK VALVE 0-101 OD X 0-131 IN ID OF SPRING	EA	1	*	*	*	*	*	*		3	19	010
PAFZZ	6940-250-6545	SCB25629 (80063)	SPRING, HELICAL, COMPRESSION 021.....	LOADING FOR SPEED CONTROL GEAR 1-1-4 X 0- 515	EA	1	*	*	*	*	*	*		3		021
PAFZZ	6940-250-6566	SCB25691 (80063)	SPRING, HELICAL, COMPRESSION 020.....	DISENGAGES TAPE FULLER 3-4 X 0-305 IN	EA	1	*	*	*	*	*	*		3		020
PAFZZ	5340-237-5882	SCB25634 (80063)	SPRING, HELICAL, EXTENSION C23 FOR.....	SPEED CONTROL MECHANISM 1-4 X 5-1-4 IN	EA	1	*	*	*	*	*	*		5		023
PAFZZ	6940-237-5881	SCB25652 (80063)	SPRING, HELICAL, EXTENSION 019 PRESSURE	ARM SPRING 0-217 X 7-10 IN LG	EA	1	*	*	*	*	*	*		5		019
PAFZZ	6940-250-6564	SCB25655 (80063)	SPRING, HELICAL, EXTENSION 024 PLATEN..	TENSION 1-4 OD X 0-196 IN ID	EA	1	*	*	*	*	*	*		5		024
PAFZZ	5345-582-3181	SCB25653 (80063)	STONE, SHARPENING NO-REF-DESIG SQUARE..	TYPE HARD 3-16 SQ X 2-1-2 IN	EA	1	*	*	*	*	*	*		3	1	
PAFZZ	5805-776-5865	SCC25708-4 (80063)	STOP ASSEMBLY NO-REF-DESIG 0-793 BLOCK..		EA	1	*	*	*	*	*	*		3	13	

CONTINUED

SECTION II

TM 11-5805-253-34P

(1) SIR CODE	(2) FEDERAL STOCK NUMBER	(3) DESCRIPTION REFERENCE NUMBER & MFR. CODE USABLE ON CODE	(4) UNIT OF MEAS	(5) QTY INC IN UNIT	(6) 30-DAY GS MAINT ALLOWANCE			(7) 30-DAY GS MAINT ALLOWANCE			(8) 1-YR ALW PER 100 EQUIP ENTGCTY	(9) DEPOT MAINT ALW PER 100 EQUIP	(10) ILLUSTRATION	
					(a)	(b)	(c)	(a)	(b)	(c)			(a)	(b)
					1-20	21-50	51-100	1-20	21-50	51-100			FIGURE NO.	ITEM NO.
		CONTINUED												
PAFZZ	5307-407-7937	SC825608 (80063) STUD, THREADED NO-REF-DESIG DOUBLE THD . S-40NC2 2-1-4 IN LG	EA	1	*	*	*	*	*	*		2		
PAFZZ	5930-566-1515	SC825675 (80063) SWITCH, TOGGLE S4 SPOT BAT TYPE..... ACTUATING HANDLE NS35050-23 (81349)	EA	1	*	*	*	*	*	*		5	15 S4	
PAFZZ	5930-655-1506	SWITCH, TOGGLE S1 OPDT BAT TYPE..... ACTUATING HANDLE NS25100-23 (81349)	EA	3	*	*	*	*	*	*		5	22 S1	
PAFZZ	5930-655-1508	SWITCH, TOGGLE S3 OPDT BAT TYPE..... ACTUATING HANDLE NS25100-23 (81349)	EA	REF	*	*	*	*	*	*		5	15 S3	
PAFZZ	5930-655-1508	SWITCH, TOGGLE S6 OPDT BAT TYPE..... ACTUATING HANDLE NS25100-23 (81349)	EA	REF	*	*	*	*	*	*		5	15 S6	
PAFZZ	5930-655-1507	SWITCH, TOGGLE S2 OPST BAT TYPE..... ACTUATING HANDLE NS25100-22 (81349)	EA	1	*	*	*	*	*	*		5	15 S2	
PAFZZ	5930-615-7896	SWITCH, TOGGLE S5 SPST BAT TYPE..... ACTUATING HANDLE NS25098-22 (81349)	EA	1	*	*	*	*	*	*		5	15 S5	
PAOZZ	5305-407-9180	THUMB SCREW NO-REF-DESIG KNURLED THUMB.. HEAD 1-4 IN 20NC2 1-2 IN LG UNDERHEAD	EA	1	*	*	*	*	*	*		3	7	
PAOZZ	5305-407-9175	SC825614 (80063) THUMB SCREW NO-REF-DESIG KNURLED..... THUMBHEAD #10-32NF2 7-8 IN LG UNDERHEAD	EA	1	*	*	*	*	*	*		3	7	
PAOZZ	5305-407-9173	SC825734 (80063) THUMBSCREW NO-REF-DESIG KNURLED THUMB... HEAD 21-32 IN LG UNDERHEAD	EA	1	*	*	*	*	*	*		3	7	
PAOZZ	5305-207-7725	SC825742 (80063) THUMBSCREW M25 KNURLED THUMB HEAD 6-.. 32NC2 15-16 LG 1-2 DIA X 3-16 IN W.	EA	1	*	*	*	*	*	*		3	7 M25	
PAFZZ	5950-199-2330	SC825530 (80063) TRANSFORMER, AUDIO FREQUENCY T2 PRIM.. WIND 6500 OHM IMPEDANCE 100 MA SEC WIND 6 OHM IMPEDANCE 1500 VRMS TEST 2-5-8 SO X 3-51-64 INH	EA	1	*	*	*	*	*	*		3	14 T2	
PAFZZ	5950-244-3683	SCC25539 (80063) TRANSFORMER, AUDIO FREQUENCY T1 PRIM.. WIND 10,000 OHM IMPEDANCE 10 MA SEC 40, 600 OHM IMPEDANCE CT 1500 VRMS TEST 3 X 2-1-4 IN DIA	EA	1	*	*	*	*	*	*		3	14 T1	
PAFZZ	5950-647-5235	ML71-1 (98675) TRANSFORMER, POWER, STEP-DOWN AND STEP-UP. T3 60 CY, 1 PH 115V-220V SEC WIND 700V-0-120 AMP, 300V-0.030 AMP	EA	1	*	*	*	*	*	*		3	14 T3	
PAFZZ	5835-162-6336	SCC2555V (80063) TUBE, RUBBER NO-REF-DESIG FLEX..... CONNECTION FROM WELL TO PEN 1 (73680)	EA	1	*	*	*	*	*	*		3	7	

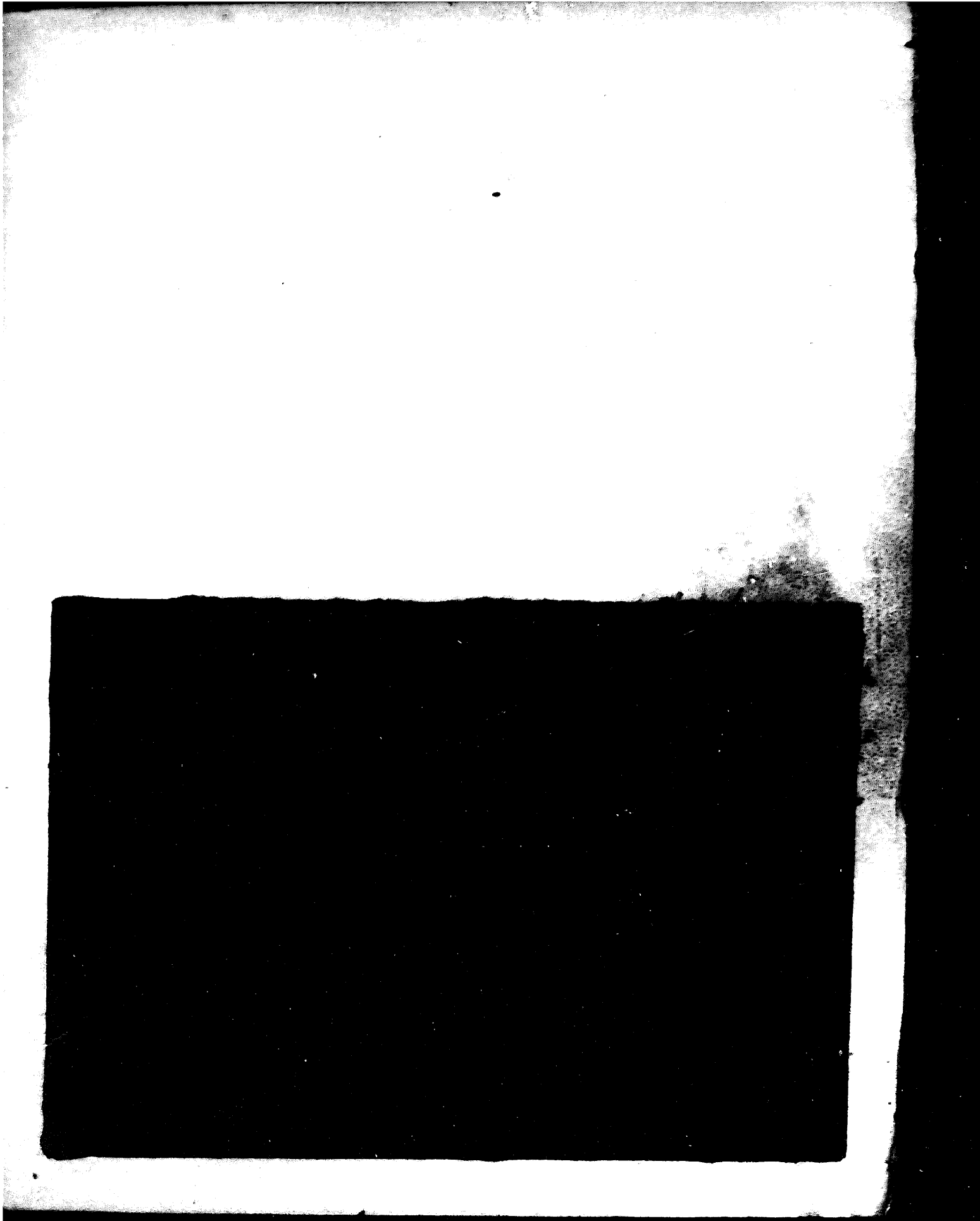
SECTION II

TM 11-5805-253-34P

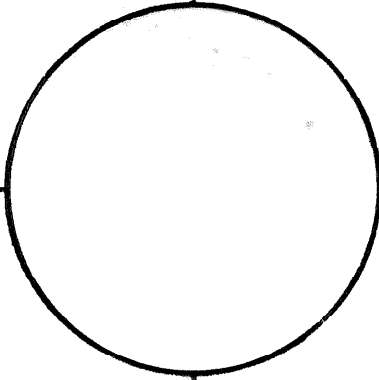
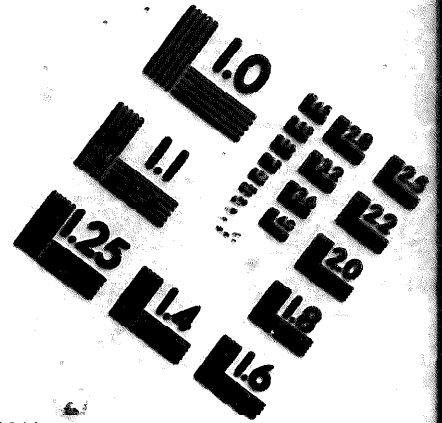
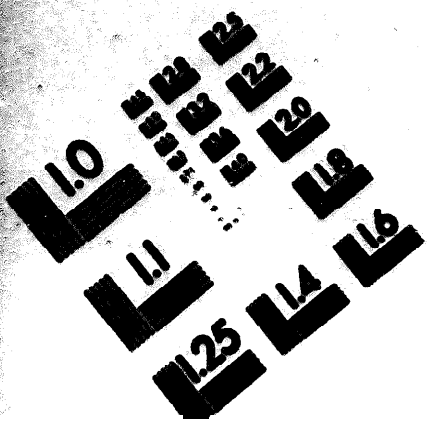
(1) SMR CODE	(2) FEDERAL STOCK NUMBER	(3) DESCRIPTION: REFERENCE NUMBER & MFR. CODE USABLE ON CODE		(4) UNIT OF MEAS	(5) QTY INC IN UNIT	(6) 30-DAY GS MAINT ALLOWANCE			(7) 30-DAY GS MAINT ALLOWANCE			(8) 1-YR ALW PER 100 EQUIP CNTCTY	(9) DEPOT MAINT ALW PER 100 EQUIP	(10) ILLUSTRATION	
						(a)	(b)	(c)	(a)	(b)	(c)			(a)	(b)
						1-20	21-50	51-100	1-20	21-50	51-100			FIGURE NO.	ITEM NO.
PAFZZ	5805-356-3640	WHEEL, FRICTION DRIVE 031 TRANSLATES... NOTICH FROM TAPE DRIVE SHAPT TOTAPE 0-294 THK X 1-062 IN DIA SCB25747 (80063)		EA	1	*	*	*	*	*	*		25	13	031
PAOZZ	5805-356-2639	WHEEL, FRICTION DRIVE 01 FRICTION FOR. VAR SPEED DRIVE 2-1-2 DIA X 1 IN DIA HOLE X 3-16 IN THK SCB25444 (80063)		EA	1	*	*	*	*	*	*		25	13	01
PAFZZ	5605-355-2638	WHEEL, FRICTION DRIVE 017 PULLS INKED.. TAPE 1-1-8 X 3-4 IN SCB25744 (80063)		EA	1	*	*	*	*	*	*		25	13	017
PAFZZ	5805-800-9494	YOKE, PEN NO-REF-DESIG 1-3-4 LG X 1-1-8. W X 1-2 IN DIA A308169 (93190)		EA	1	*	*	*	*	*	*		3	6	

INDEX - FEDERAL STOCK NUMBER AND REFERENCE NUMBER
CROSS-REFERENCE TO FIGURE AND ITEM NUMBER

STOCK NUMBER	FIGURE NO.	ITEM NO.	STOCK NUMBER	FIGURE NO.	ITEM NO.
3020-219-9703	11		5905-642-3760	15	R15
3110-155-8414	11	02	5910-101-5701	15	C1
3110-155-8416	11	04	5910-112-7006	15	C4
3110-155-5601	11	05	5910-112-0333	14	C3A
3110-155-5620	11	03	5910-112-0333	14	C3B
3110-155-9628	11	06	5910-129-6295	15	C5
3110-155-9628	11	08	5910-129-6295	22	C4
3110-155-9628	11	09	5910-160-1166	22	F9
4730-370-5594	7	025	5910-160-2209	14	C0
5305-207-7725	7	M25	5910-161-6561	14	C2
5305-222-4358	13		5910-239-6159	15	C10
5305-407-8484	10		5910-239-6159	15	C11
5305-407-8487	10		5910-239-6159	15	C12
5305-407-8743	13		5920-190-3973	22	F1
5305-407-9173	7		5920-190-9484	22	F2
5305-407-9175	7		5920-204-0201	15	MF1
5305-407-9180	7		5920-204-0201	15	MF2
5305-407-9058	13		5920-351-7264	1	
5305-408-0042	13		5930-615-7006	15	S5
5307-407-7937		073	5930-695-1507	15	S2
5340-237-5882			5930-695-1508	15	S3
5345-582-3101	1		5930-695-1508	15	S6
5355-160-6076	1		5930-695-1508	22	S1
5355-171-3402		14	5930-695-1514	15	S4
5355-171-3402	1	13	5935-199-0279	15	01
5805-170-5267	1	G16	5935-232-3715	15	X1
5805-170-5266	1		5935-232-3715	15	X2
5805-170-5269	1		5935-232-3715	15	X3
5805-254-6829	13		5935-232-3715	15	X4
5805-356-2638	13	017	5935-232-3715	15	X5
5805-356-2639	13	01	5935-232-3715	15	X0
5805-356-2640	13	031	5935-232-3715	15	X0
5805-356-3566	1		5935-232-3715	14	X10
5805-356-3567	1		5935-232-3750	15	X6
5805-356-3568	1		5935-232-3750	15	X7
5805-356-3640	7		5935-250-9001	15	J1
5805-399-7299		A1	5935-283-1269	15	J1
5805-404-9031	11		5935-283-3392	1	P2
5805-405-1469	13		5950-199-2330	14	T2
5805-405-1470	11		5950-232-8643	15	L3
5805-405-1471	13		5950-243-5208	14	L1
5805-546-7303	11		5950-244-3683	14	T1
5805-651-5449	10		5950-240-1702	14	L4
5805-693-9823			5950-560-0333	10	L2
5805-776-5865	13		5950-647-5235	14	T3
5805-800-9494	6		5960-188-0800	14	V6
5810-161-0089	7	027	5960-188-3574	14	V9
5835-162-6336	7		5960-188-3949	14	V5
5835-162-6337	1		5960-188-8573	14	V8
5835-351-4334	13		5960-188-8573	14	V9
5835-405-1468	11		5960-240-8491	14	V2
5905-112-4271	15	010	5960-262-0161	14	V4
5905-117-0062	15	09	5960-262-0202	14	V1
5905-185-8521	15	021	5960-503-4980	14	V7
5905-185-8521	15	022	5960-573-5584	14	E5
5905-190-8865	15	013	5960-570-5584	14	E4
5905-190-8865	15	014	6105-407-0244	11	024
5905-192-0390	15	07	6130-199-9518	15	CR1
5925-195-6743	15	020	6145-164-8621	1	
5925-195-6761	15	05	6210-174-8866	1	
5905-195-6806	15	03	6210-186-7910	15	11
5925-245-0023	15	04	6210-186-7910	15	12
5905-249-4198	15	017	6240-179-1807	15	11
5925-249-4248	15	010		15	12
5905-279-1717	15	011	6240-179-1807	15	12
5925-279-2295	15	016	6940-237-5881		019
5925-279-2295	15	019	6940-250-6563	19	018
5905-279-2515	15	014	6940-250-6564		024
5905-279-2803	15	01	6940-250-6565		021
5925-293-3410	15	08	6940-250-6566		020
5905-299-2037	15	02	8110-664-3793	1	



DEPARTMENT OF THE ARMY
MICROFORM
TEST TARGET



150 MM

1.0 mm (ø= 81 mm)

ABCDEFGHIJKLMN OPQRSTUVWXYZ
abcdefghijklmnopqrstuvwxyz 1234567890

1.5 mm (ø= 1.00 mm)

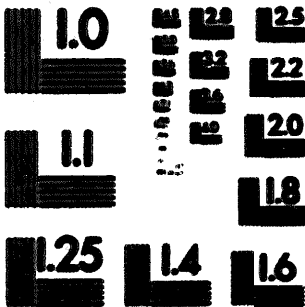
ABCDEFGHIJKLMN OPQRSTUVWXYZ 1234567890
abcdefghijklmnopqrstuvwxyz 1234567890

2.0 mm (ø= 1.37 mm)

ABCDEFGHIJKLMN OPQRSTUVWXYZ
abcdefghijklmnopqrstuvwxyz
1234567890 & e / % # 1/2 1/4 — + x & @ *

2.5 mm (ø= 1.77 mm)

ABCDEFGHIJKLMN OPQRSTUVWXYZ
abcdefghijklmnopqrstuvwxyz
1234567890 & e / % # 1/2 1/4 — + x & @ *



1.0 mm (ø= 81 mm)

ABCDEFGHIJKLMN OPQRSTUVWXYZ 1234567890
abcdefghijklmnopqrstuvwxyz 1234567890

1.5 mm (ø= 1.00 mm)

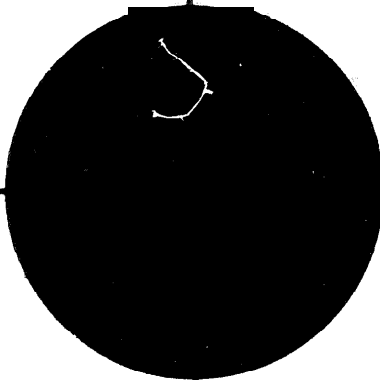
ABCDEFGHIJKLMN OPQRSTUVWXYZ 1234567890
abcdefghijklmnopqrstuvwxyz 1234567890

2.0 mm (ø= 1.37 mm)

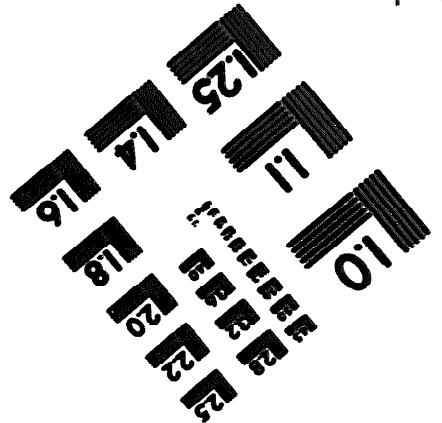
ABCDEFGHIJKLMN OPQRSTUVWXYZ
abcdefghijklmnopqrstuvwxyz
1234567890 & e / % # 1/2 1/4 — + x & @ *

2.5 mm (ø= 1.77 mm)

ABCDEFGHIJKLMN OPQRSTUVWXYZ
abcdefghijklmnopqrstuvwxyz
1234567890 & e / % # 1/2 1/4 — + x & @ *



200 MM



250 MM

By Order of the Secretary of the Army:

Official:

VERNE L. BOWERS

*Major General, United States Army
The Adjutant General*

CREIGHTON W. ABRAMS
*General, United States Army
Chief of Staff*

Distribution:

Active Army:

USASA (2)
CNGB (1)
ACSC-E (2)
USAAZENBD (2)
USAMB (10)
AMC (1)
FCRSCOM (5)
ARADCOM (2)
ARADCOM Rgn (2)
OS Maj Comd (4)
LOGCOMDS (5)
MICOM (2)
TECOM (2)
USASTRATCOM (4)
HISA (ECOM) (21)
MDW (1)
Armies (2)
Corps (2)
Svc Colleges (2)
USASESS (5)
USAADS (2)
USAFAS (2)
USAARMS (2)
USAIS (2)
USAES (2)
USAINTS (3)
USACSECE (5)

Inatl (2) except
Fort Carson (10)
Fort Huachuca (10)
Fort Gordon (10)
 Ft Richardson (ECOM Ofc) (2)
WSMR (2)
Army Dep (2) except
LBAD (14)
SAAD (30)
TOAD (14)
ATAD (10)
LEAD (7)
USA Dep (2)
Sig Sec USA Dep (2)
Sig Dep (5)
Sig FLDMS (1)
USAERDAA (1)
USAERDAW (1)
MAAG (1)
USARMIS (1)
WRAMC (1)
Units org under fol TOE:
(1 copy each unit)
11-158
29-134
29-136

NG: None

USAR: None

For explanation of abbreviations used, see AR 310-50.

★ U.S. GOVERNMENT PRINTING OFFICE: 1973-768265/82

END

7-25-83

DATE

